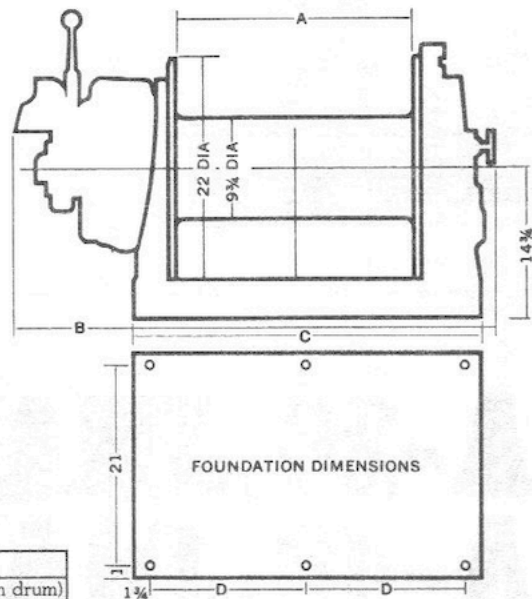


DIMENSIONS (Inches)

	A	B	C	D
JHA-60-24	24	48	35 1/2	16 (3 Hole)
JHA-60-30	30	52	41 1/2	12 3/4 (4 Hole)
JHAL-60-36	36	58	47 1/2	14 1/2 (4 Hole)



General Specifications

Rated Capacity	@ 100 psig			
Maximum Pull at Stall	11,000 lbs. (1st turn on drum)			
Rope Pull @ Line Speed (drum 1/2 full)	7000 lbs. @ 50 ft/min.			
PISTONAIR Motor Model (& Horsepower)	AMP.180 (18 hp)			
Air Consumption (at max. horsepower)	530 cfm			
Net Weight	1098 lbs. (w/24" drum)			
	1170 lbs. (w/30" drum)			
	1250 lbs. (w/36" drum)			
Rope Capacities (smooth wind)	24" drum	30" drum	36" drum	
	1/2"	2350 ft.	2710 ft.	3550 ft.
	5/8"	1400 ft.	1780 ft.	2100 ft.
	3/4"	1050 ft.	1255 ft.	1575 ft.

Standard Equipment

Instruction manual & parts list • Reversing throttle valve w/self-centering control • Hand operated toggle band brake • Safety dog for locking drum • Manually engaged gear clutch •

Optional Equipment

Exhaust muffler • Automatic brake • Remote control • Metal drum guard • Constant tension manifold • Disc brake • Marine protective epoxy paint.

JHA-60, JHA-T-60